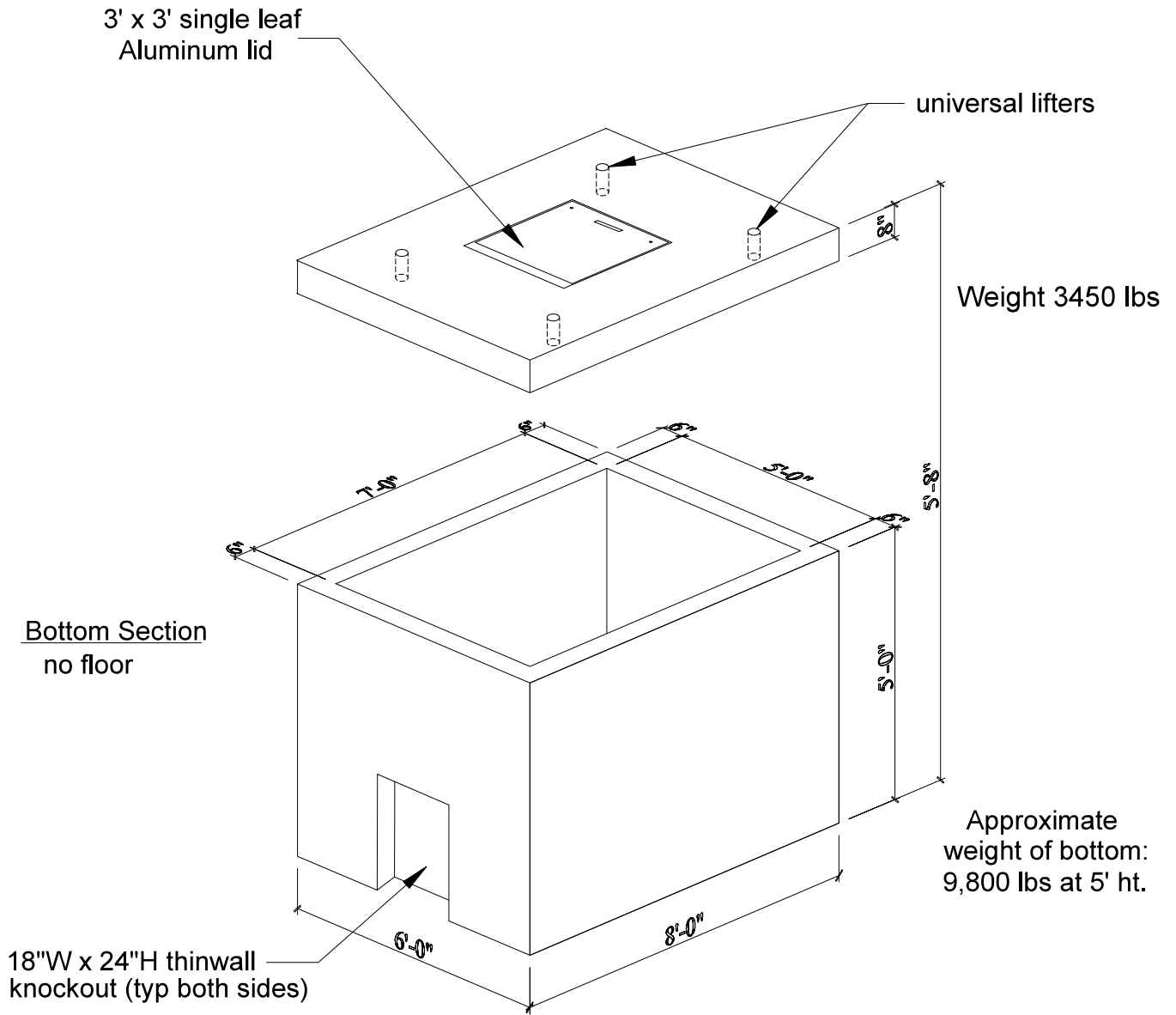


5' x 7' Vault with 3' x 3' H20 Aluminum Lid



Specifications:

- Concrete has a 28 day strength of 5,000 psi
- Steel reinforcement is ASTM A615 Grade 60
- Load design is H-20



Lone Star Precast
454 Kelly Smith Lane
Buda, Texas 78610
Ph: 512.312.2121



TITLE

5' x 7' Vault

PART NO

-

DWG NO

-

REV

DRAWN

VAC

DATE

02/13/2023

SCALE

1 / 40

Dimensions Unit: inch

SHEET 1 OF 1